

Создано: 26.11.2025 в 14:53

Обновлено: 07.02.2026 в 16:49

**Санкт-Петербург, Большая Московская  
улица, 9**

**198 000 ₽**

Санкт-Петербург, Большая Московская улица, 9

Округ

[СПБ, Центральный район](#)

Улица

[улица Большая Московская](#)

**ПСН - Помещение свободного назначения**

Общая площадь

229 м<sup>2</sup>

**Детали объекта**

Тип сделки

Сдаю

Раздел

[Коммерческая недвижимость](#)

**Описание**

В аренде в этом месте впервые!

Коммерческое помещение с двумя  
отдельными входами с Большой Московской  
9, и третий вход отдельный со двора.

Мощность 15 кВт в помещении с увеличением  
без сложностей. Идеально под КБ, или  
строительный магазин, которых в этом месте  
нет. Много подсобных помещений можно  
сделать. В 5 минутах ходьбы до метро  
Владимирская и Достоевская. Обременения:  
ипотека с льготным кредитованием.

Помещение без ремонта. Инфраструктура:

<https://spb.move.ru/objects/9286878317>

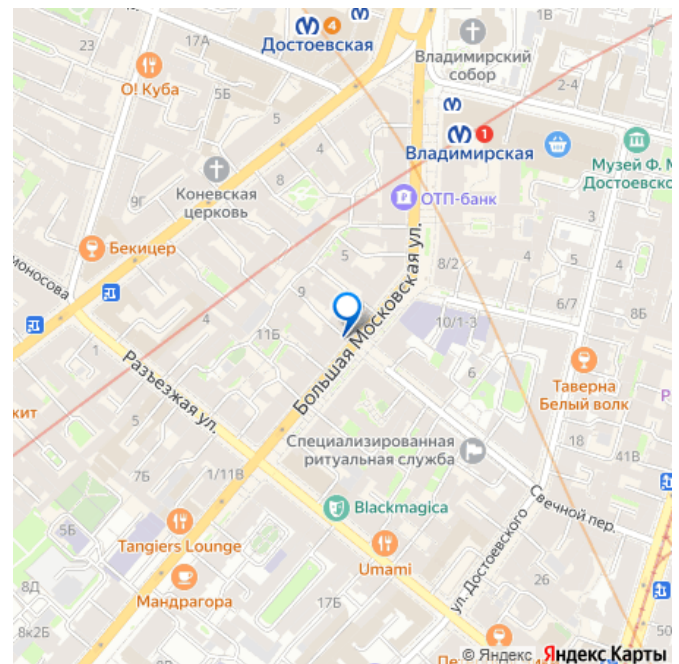
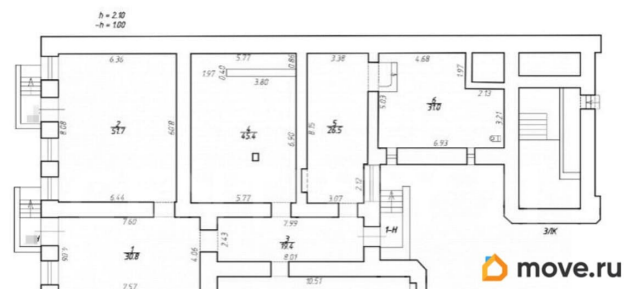
**Вячеслав Муравьёв, CENTURY 21**

**Capital Petersburg**

**79118160975**

для заметок

План части цокольного этажа



План части цокольного этажа

h = 2.10  
-h = 100

The plan shows a basement section with several rooms and corridors. The rooms are labeled with numbers: 517, 134, 525, 117, 118, 119, and 120. The dimensions are as follows:

- Room 517: 6.30 x 6.07
- Room 134: 5.77 x 5.77
- Room 525: 7.38 x 6.93
- Room 117: 4.68 x 3.15
- Room 118: 7.00 x 7.57
- Room 119: 7.99 x 8.11
- Room 120: 3.00 x 3.00

Corridors and other areas are labeled with dimensions: 1.97, 3.60, 1.02, 1.07, 2.10, 1.14, 1.17, 1.19, 1.21, 1.23, 1.25, 1.27, 1.29, 1.31, 1.33, 1.35, 1.37, 1.39, 1.41, 1.43, 1.45, 1.47, 1.49, 1.51, 1.53, 1.55, 1.57, 1.59, 1.61, 1.63, 1.65, 1.67, 1.69, 1.71, 1.73, 1.75, 1.77, 1.79, 1.81, 1.83, 1.85, 1.87, 1.89, 1.91, 1.93, 1.95, 1.97, 1.99, 2.01, 2.03, 2.05, 2.07, 2.09, 2.11, 2.13, 2.15, 2.17, 2.19, 2.21, 2.23, 2.25, 2.27, 2.29, 2.31, 2.33, 2.35, 2.37, 2.39, 2.41, 2.43, 2.45, 2.47, 2.49, 2.51, 2.53, 2.55, 2.57, 2.59, 2.61, 2.63, 2.65, 2.67, 2.69, 2.71, 2.73, 2.75, 2.77, 2.79, 2.81, 2.83, 2.85, 2.87, 2.89, 2.91, 2.93, 2.95, 2.97, 2.99, 3.01, 3.03, 3.05, 3.07, 3.09, 3.11, 3.13, 3.15, 3.17, 3.19, 3.21, 3.23, 3.25, 3.27, 3.29, 3.31, 3.33, 3.35, 3.37, 3.39, 3.41, 3.43, 3.45, 3.47, 3.49, 3.51, 3.53, 3.55, 3.57, 3.59, 3.61, 3.63, 3.65, 3.67, 3.69, 3.71, 3.73, 3.75, 3.77, 3.79, 3.81, 3.83, 3.85, 3.87, 3.89, 3.91, 3.93, 3.95, 3.97, 3.99, 4.01, 4.03, 4.05, 4.07, 4.09, 4.11, 4.13, 4.15, 4.17, 4.19, 4.21, 4.23, 4.25, 4.27, 4.29, 4.31, 4.33, 4.35, 4.37, 4.39, 4.41, 4.43, 4.45, 4.47, 4.49, 4.51, 4.53, 4.55, 4.57, 4.59, 4.61, 4.63, 4.65, 4.67, 4.69, 4.71, 4.73, 4.75, 4.77, 4.79, 4.81, 4.83, 4.85, 4.87, 4.89, 4.91, 4.93, 4.95, 4.97, 4.99, 5.01, 5.03, 5.05, 5.07, 5.09, 5.11, 5.13, 5.15, 5.17, 5.19, 5.21, 5.23, 5.25, 5.27, 5.29, 5.31, 5.33, 5.35, 5.37, 5.39, 5.41, 5.43, 5.45, 5.47, 5.49, 5.51, 5.53, 5.55, 5.57, 5.59, 5.61, 5.63, 5.65, 5.67, 5.69, 5.71, 5.73, 5.75, 5.77, 5.79, 5.81, 5.83, 5.85, 5.87, 5.89, 5.91, 5.93, 5.95, 5.97, 5.99, 6.01, 6.03, 6.05, 6.07, 6.09, 6.11, 6.13, 6.15, 6.17, 6.19, 6.21, 6.23, 6.25, 6.27, 6.29, 6.31, 6.33, 6.35, 6.37, 6.39, 6.41, 6.43, 6.45, 6.47, 6.49, 6.51, 6.53, 6.55, 6.57, 6.59, 6.61, 6.63, 6.65, 6.67, 6.69, 6.71, 6.73, 6.75, 6.77, 6.79, 6.81, 6.83, 6.85, 6.87, 6.89, 6.91, 6.93, 6.95, 6.97, 6.99, 7.01, 7.03, 7.05, 7.07, 7.09, 7.11, 7.13, 7.15, 7.17, 7.19, 7.21, 7.23, 7.25, 7.27, 7.29, 7.31, 7.33, 7.35, 7.37, 7.39, 7.41, 7.43, 7.45, 7.47, 7.49, 7.51, 7.53, 7.55, 7.57, 7.59, 7.61, 7.63, 7.65, 7.67, 7.69, 7.71, 7.73, 7.75, 7.77, 7.79, 7.81, 7.83, 7.85, 7.87, 7.89, 7.91, 7.93, 7.95, 7.97, 7.99, 8.01, 8.03, 8.05, 8.07, 8.09, 8.11, 8.13, 8.15, 8.17, 8.19, 8.21, 8.23, 8.25, 8.27, 8.29, 8.31, 8.33, 8.35, 8.37, 8.39, 8.41, 8.43, 8.45, 8.47, 8.49, 8.51, 8.53, 8.55, 8.57, 8.59, 8.61, 8.63, 8.65, 8.67, 8.69, 8.71, 8.73, 8.75, 8.77, 8.79, 8.81, 8.83, 8.85, 8.87, 8.89, 8.91, 8.93, 8.95, 8.97, 8.99, 9.01, 9.03, 9.05, 9.07, 9.09, 9.11, 9.13, 9.15, 9.17, 9.19, 9.21, 9.23, 9.25, 9.27, 9.29, 9.31, 9.33, 9.35, 9.37, 9.39, 9.41, 9.43, 9.45, 9.47, 9.49, 9.51, 9.53, 9.55, 9.57, 9.59, 9.61, 9.63, 9.65, 9.67, 9.69, 9.71, 9.73, 9.75, 9.77, 9.79, 9.81, 9.83, 9.85, 9.87, 9.89, 9.91, 9.93, 9.95, 9.97, 9.99, 10.01, 10.03, 10.05, 10.07, 10.09, 10.11, 10.13, 10.15, 10.17, 10.19, 10.21, 10.23, 10.25, 10.27, 10.29, 10.31, 10.33, 10.35, 10.37, 10.39, 10.41, 10.43, 10.45, 10.47, 10.49, 10.51, 10.53, 10.55, 10.57, 10.59, 10.61, 10.63, 10.65, 10.67, 10.69, 10.71, 10.73, 10.75, 10.77, 10.79, 10.81, 10.83, 10.85, 10.87, 10.89, 10.91, 10.93, 10.95, 10.97, 10.99, 11.01, 11.03, 11.05, 11.07, 11.09, 11.11, 11.13, 11.15, 11.17, 11.19, 11.21, 11.23, 11.25, 11.27, 11.29, 11.31, 11.33, 11.35, 11.37, 11.39, 11.41, 11.43, 11.45, 11.47, 11.49, 11.51, 11.53, 11.55, 11.57, 11.59, 11.61, 11.63, 11.65, 11.67, 11.69, 11.71, 11.73, 11.75, 11.77, 11.79, 11.81, 11.83, 11.85, 11.87, 11.89, 11.91, 11.93, 11.95, 11.97, 11.99, 12.01, 12.03, 12.05, 12.07, 12.09, 12.11, 12.13, 12.15, 12.17, 12.19, 12.21, 12.23, 12.25, 12.27, 12.29, 12.31, 12.33, 12.35, 12.37, 12.39, 12.41, 12.43, 12.45, 12.47, 12.49, 12.51, 12.53, 12.55, 12.57, 12.59, 12.61, 12.63, 12.65, 12.67, 12.69, 12.71, 12.73, 12.75, 12.77, 12.79, 12.81, 12.83, 12.85, 12.87, 12.89, 12.91, 12.93, 12.95, 12.97, 12.99, 13.01, 13.03, 13.05, 13.07, 13.09, 13.11, 13.13, 13.15, 13.17, 13.

Architectural floor plan of a 3-room apartment. The plan includes the following dimensions and features:

- Overall Dimensions:**  $b = 2.10$ ,  $-b = 1.00$
- Rooms and Dimensions:**
  - Room 1:  $5.77 \times 3.60$
  - Room 2:  $5.77 \times 3.60$
  - Room 3:  $5.77 \times 3.60$
  - Room 4:  $5.77 \times 3.60$
  - Room 5:  $5.77 \times 3.60$
  - Room 6:  $5.77 \times 3.60$
  - Room 7:  $5.77 \times 3.60$
  - Room 8:  $5.77 \times 3.60$
  - Room 9:  $5.77 \times 3.60$
  - Room 10:  $5.77 \times 3.60$
  - Room 11:  $5.77 \times 3.60$
  - Room 12:  $5.77 \times 3.60$
  - Room 13:  $5.77 \times 3.60$
  - Room 14:  $5.77 \times 3.60$
  - Room 15:  $5.77 \times 3.60$
  - Room 16:  $5.77 \times 3.60$
  - Room 17:  $5.77 \times 3.60$
  - Room 18:  $5.77 \times 3.60$
  - Room 19:  $5.77 \times 3.60$
  - Room 20:  $5.77 \times 3.60$
  - Room 21:  $5.77 \times 3.60$
  - Room 22:  $5.77 \times 3.60$
  - Room 23:  $5.77 \times 3.60$
  - Room 24:  $5.77 \times 3.60$
  - Room 25:  $5.77 \times 3.60$
  - Room 26:  $5.77 \times 3.60$
  - Room 27:  $5.77 \times 3.60$
  - Room 28:  $5.77 \times 3.60$
  - Room 29:  $5.77 \times 3.60$
  - Room 30:  $5.77 \times 3.60$
  - Room 31:  $5.77 \times 3.60$
  - Room 32:  $5.77 \times 3.60$
  - Room 33:  $5.77 \times 3.60$
  - Room 34:  $5.77 \times 3.60$
  - Room 35:  $5.77 \times 3.60$
  - Room 36:  $5.77 \times 3.60$
  - Room 37:  $5.77 \times 3.60$
  - Room 38:  $5.77 \times 3.60$
  - Room 39:  $5.77 \times 3.60$
  - Room 40:  $5.77 \times 3.60$
  - Room 41:  $5.77 \times 3.60$
  - Room 42:  $5.77 \times 3.60$
  - Room 43:  $5.77 \times 3.60$
  - Room 44:  $5.77 \times 3.60$
  - Room 45:  $5.77 \times 3.60$
  - Room 46:  $5.77 \times 3.60$
  - Room 47:  $5.77 \times 3.60$
  - Room 48:  $5.77 \times 3.60$
  - Room 49:  $5.77 \times 3.60$
  - Room 50:  $5.77 \times 3.60$
  - Room 51:  $5.77 \times 3.60$
  - Room 52:  $5.77 \times 3.60$
  - Room 53:  $5.77 \times 3.60$
  - Room 54:  $5.77 \times 3.60$
  - Room 55:  $5.77 \times 3.60$
  - Room 56:  $5.77 \times 3.60$
  - Room 57:  $5.77 \times 3.60$
  - Room 58:  $5.77 \times 3.60$
  - Room 59:  $5.77 \times 3.60$
  - Room 60:  $5.77 \times 3.60$
  - Room 61:  $5.77 \times 3.60$
  - Room 62:  $5.77 \times 3.60$
  - Room 63:  $5.77 \times 3.60$
  - Room 64:  $5.77 \times 3.60$
  - Room 65:  $5.77 \times 3.60$
  - Room 66:  $5.77 \times 3.60$
  - Room 67:  $5.77 \times 3.60$
  - Room 68:  $5.77 \times 3.60$
  - Room 69:  $5.77 \times 3.60$
  - Room 70:  $5.77 \times 3.60$
  - Room 71:  $5.77 \times 3.60$
  - Room 72:  $5.77 \times 3.60$
  - Room 73:  $5.77 \times 3.60$
  - Room 74:  $5.77 \times 3.60$
  - Room 75:  $5.77 \times 3.60$
  - Room 76:  $5.77 \times 3.60$
  - Room 77:  $5.77 \times 3.60$
  - Room 78:  $5.77 \times 3.60$
  - Room 79:  $5.77 \times 3.60$
  - Room 80:  $5.77 \times 3.60$
  - Room 81:  $5.77 \times 3.60$
  - Room 82:  $5.77 \times 3.60$
  - Room 83:  $5.77 \times 3.60$
  - Room 84:  $5.77 \times 3.60$
  - Room 85:  $5.77 \times 3.60$
  - Room 86:  $5.77 \times 3.60$
  - Room 87:  $5.77 \times 3.60$
  - Room 88:  $5.77 \times 3.60$
  - Room 89:  $5.77 \times 3.60$
  - Room 90:  $5.77 \times 3.60$
  - Room 91:  $5.77 \times 3.60$
  - Room 92:  $5.77 \times 3.60$
  - Room 93:  $5.77 \times 3.60$
  - Room 94:  $5.77 \times 3.60$
  - Room 95:  $5.77 \times 3.60$
  - Room 96:  $5.77 \times 3.60$
  - Room 97:  $5.77 \times 3.60$
  - Room 98:  $5.77 \times 3.60$
  - Room 99:  $5.77 \times 3.60$
  - Room 100:  $5.77 \times 3.60$
- Other Features:**
  - Staircase (лестница)
  - Entrance (вход)
  - Corridor (коридор)
  - Room 101:  $5.77 \times 3.60$
  - Room 102:  $5.77 \times 3.60$
  - Room 103:  $5.77 \times 3.60$
  - Room 104:  $5.77 \times 3.60$
  - Room 105:  $5.77 \times 3.60$
  - Room 106:  $5.77 \times 3.60$
  - Room 107:  $5.77 \times 3.60$
  - Room 108:  $5.77 \times 3.60$
  - Room 109:  $5.77 \times 3.60$
  - Room 110:  $5.77 \times 3.60$
  - Room 111:  $5.77 \times 3.60$
  - Room 112:  $5.77 \times 3.60$
  - Room 113:  $5.77 \times 3.60$
  - Room 114:  $5.77 \times 3.60$
  - Room 115:  $5.77 \times 3.60$
  - Room 116:  $5.77 \times 3.60$
  - Room 117:  $5.77 \times 3.60$
  - Room 118:  $5.77 \times 3.60$
  - Room 119:  $5.77 \times 3.60$
  - Room 120:  $5.77 \times 3.60$
  - Room 121:  $5.77 \times 3.60$
  - Room 122:  $5.77 \times 3.60$
  - Room 123:  $5.77 \times 3.60$
  - Room 124:  $5.77 \times 3.60$
  - Room 125:  $5.77 \times 3.60$
  - Room 126:  $5.77 \times 3.60$
  - Room 127:  $5.77 \times 3.60$
  - Room 128:  $5.77 \times 3.60$
  - Room 129:  $5.77 \times 3.60$
  - Room 130:  $5.77 \times 3.60$
  - Room 131:  $5.77 \times 3.60$
  - Room 132:  $5.77 \times 3.60$
  - Room 133:  $5.77 \times 3.60$
  - Room 134:  $5.77 \times 3.60$
  - Room 135:  $5.77 \times 3.60$
  - Room 136:  $5.77 \times 3.60$
  - Room 137:  $5.77 \times 3.60$
  - Room 138:  $5.77 \times 3.60$
  - Room 139:  $5.77 \times 3.60$
  - Room 140:  $5.77 \times 3.60$
  - Room 141:  $5.77 \times 3.60$
  - Room 142:  $5.77 \times 3.60$
  - Room 143:  $5.77 \times 3.60$
  - Room 144:  $5.77 \times 3.60$
  - Room 145:  $5.$

